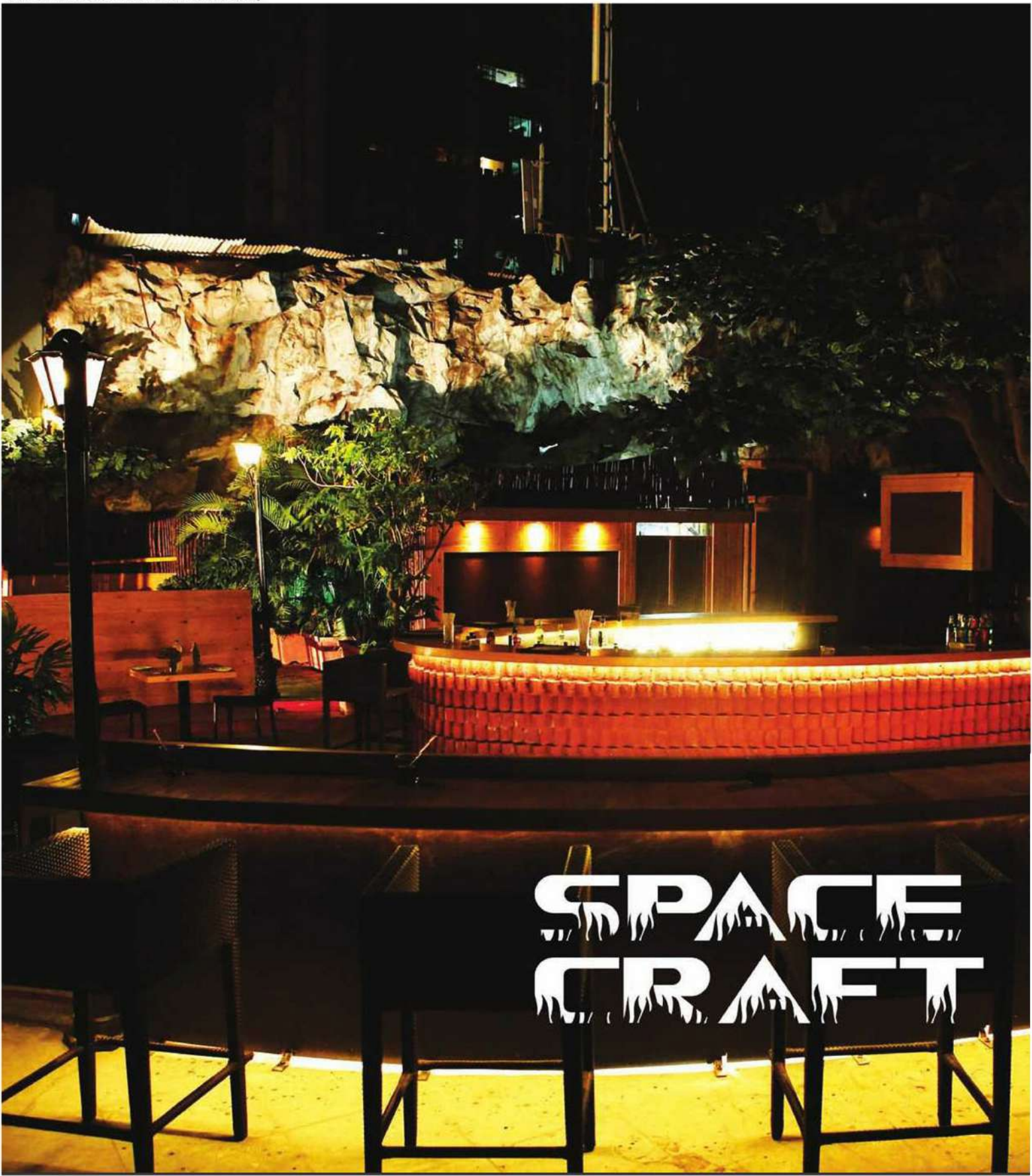


Architecture ^{7th Anniversary}

This edition includes a 68 pages Special Supplement about the LATEST TRENDS & TREND SETTERS of industry

ARCHITECTURE | INTERIORS | LANDSCAPE



SPACE CRAFT



Architect Ankita Sweety & Pratyosh Chandan initiated Studio An-V-Thot Architects Pvt. Ltd., a Design Consultancy firm Delhi in 2009. Since then, the studio has taken up and completed several Architectural and Interior projects of varied nature, scale and sizes.

Ankita Sweety graduated with a distinction in her Architectural Degree from NIT Patna. During the course, she won numerous National and State level Design Contests of repute. She is a Visiting Faculty at an Architecture College in Gurgaon. Apart from that she confidently holds the post of country's editing member for World Architecture Community.

Pratyosh Chandan (BATCM, HND), after graduating in Architectural Technology & Construction Management from Rai University, worked with an established firm in Delhi for three years wherein he led various design projects of diverse nature. He then went to UK to further pursue his architectural critique from University of Brighton, UK. Thereafter, he co-created Studio an-v-thot with Ankita to provide design solutions. Studio an-v-thot was selected as the Emerging Interior Designers of the Year by Era Fame Awards in 2013.

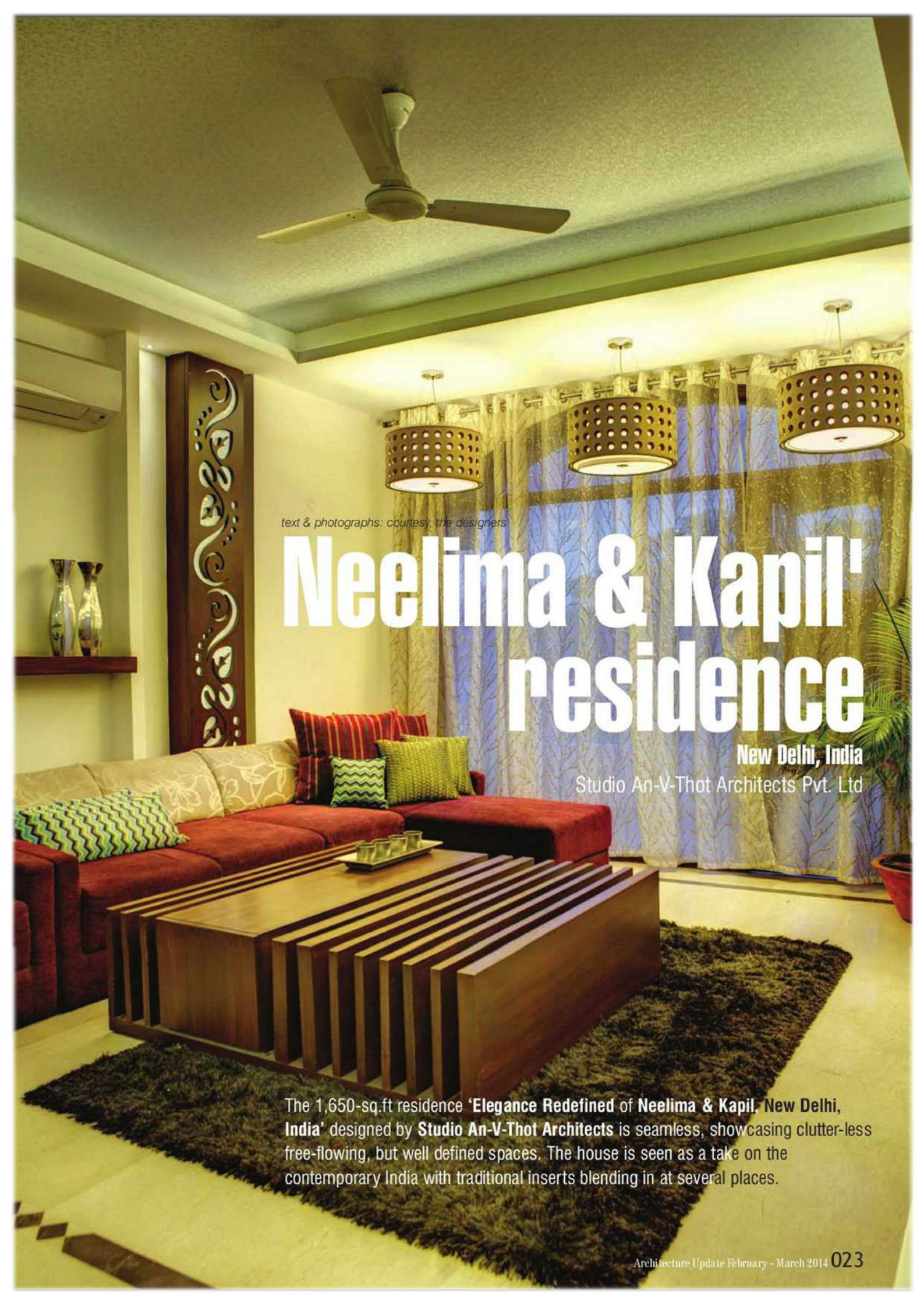


the 1,650-sq.ft 'Neelima & Kapil' residence, New Delhi, India' designed by Studio An-V-Thot Architects is seen as a take on the contemporary India with traditional inserts blending in at several places. The sole requirement by the client was to bring in a completely modern outlook to their house with lots of Whites and Greys to compliment the green that the house faced. The house is seamless, showcasing clutter-less free-flowing, but well defined spaces.

Rectangular spaces emerge with careful planning and insertions of civil alterations at several places. Focal points determined and developed to bring in a lot of storages in aesthetically pleasing manner. (This can be seen on the wall adjoining the dining area as well as the enclosed area between the rear bedrooms). Attention to thematically bring in straight lines on to the horizontal axis of the house was the conceptual basis while designing this apartment. The centre table in the living room exemplifies the concept. Ambient light management emerged with the use of glowing niches, backlit laser panels as well as the hanging lights. Bright colour insertions were brought in through fabrics and furnishings to enhance and accentuate the Whites and Greys, (which can be seen

in the sofa with the use of wine-coloured fabric along with lot of green and blue on the cushions). The apartment overlooks a lot of greenery, which can be experienced from every corner of the living and the dining room and heightened with the use of sheer instead of heavy fabric as the curtains. Traditional inserts are seen at various intervals through backlit laser cut floral patterns. Similar floral pattern is also present throughout the ceiling by using wallpaper, which runs through majority of common areas.

Planning is such that as the door opens one reaches an open foyer acting as a threshold between the inside and the outside. The living and the dining area run along the foyer. The space distinctions are designed to be felt at only at the ceiling level with the play of level differences at many places such as dropped down foyer ceiling as well as the enclosed area between the rear bedrooms. The kitchen is onto the left of the foyer, adjacent to the dining area. The master bedroom is onto the front corner of the house, facing the pleasing green belt in the front. There are two bedrooms at the rear with private balconies and washrooms. The dining and the living areas are united into one space to magnify the expanse of vision. A lot of storages are placed in the



text & photographs: courtesy, the designers

Neelima & Kapil' residence

New Delhi, India

Studio An-V-Thot Architects Pvt. Ltd

The 1,650-sq.ft residence 'Elegance Redefined of Neelima & Kapil, New Delhi, India' designed by Studio An-V-Thot Architects is seamless, showcasing clutter-less free-flowing, but well defined spaces. The house is seen as a take on the contemporary India with traditional inserts blending in at several places.



kid's room, yellows and greens along with beiges in the fabric.



transitional space, with two hanging Moroccan lights and a small creeper falling onto it.



the master bedroom, Beiges and browns are used on the furniture as well as fabrics.

master bedroom, which is finished in white pigment paint to avoid heaviness. Beiges and browns are used in this room on the furniture as well as fabrics to maintain a residential feel, which in-turn looks at a tall dull yellow finished cupboard with custom-made handles to break the monotony of colours. High bed back with cushioned fabric in dark brown with asymmetrical side tables create a sense of coziness.

A playful identity has been given to the kid' bedroom at the rear of the house by using shades of yellows and greens, along with a tint of seriousness by using beiges in the fabric. The blue wall gives a vibrant feel to the whole setup with random cuboids as storages at one corner, which additionally adds a boyish character for young son of the couple. The storages are painted with PU pigment paint in matt finish. The cupboards on to the opposite wall have panels of Yellows and Whites with custom made door handles of different colours.

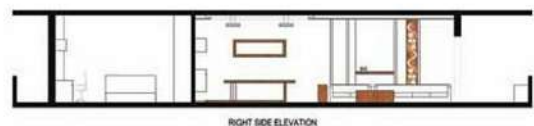
The bay window acts as the focal point in the guest bedroom. This is placed adjacent to the wall with LCD panel finished with dark Victorian wallpaper. The storages have a finish in light Beiges and Maroon, latter being used in depressed niches to avoid its dominance.

The dining table is placed in the central area and is visible through majority of the house. It was designed to have an off-centered support which runs below the table and goes on to meet the pebble bed below the storages on the wall. The dining table has a backlit

glass top with visible frames of wood to maintain the harmony and balance from the top. Minimalism can be seen on the shelf behind the sofa in the living room where a dedicated space for books and novels is created through a depression on the plank. The centre table is a square shaped piece with voids and planks on the horizontal axis of varying depth that also caters to hidden storages as pull-out drawers for stacking newspapers & magazines. The enclosure between the rear bedrooms is felt as a transitional space with high console finished in white PU pigment paint highlighted with the use of two hanging Moroccan lights and a small creeper falling onto it. Overall, the house can be seen as a take on the contemporary India with traditional inserts blending in at several places. ▲

fact file:

project : Neelima & Kapil' residence
 location : New Delhi, India
 interior designer : Studio An-V-Thot Architects Pvt. Ltd.
 dt of commencement : August 2013
 dt of completion : January 2014
 area : 1,650-sq.ft
 cost : ₹21,00,000/-
 photo credits : Saptorshi Majumdar



- Legend:**
- 01. Drawing Room
 - 02. Dining Room
 - 03. Kitchen
 - 04. Bedroom-1
 - 05. Terrace
 - 06. Toilet
 - 07. Kid's Bedroom
 - 08. Balcony
 - 09. Toilet
 - 10. Transition Space
 - 11. Bedroom-2
 - 12. Dress
 - 13. Toilet

plan.



the centre table, a square shaped piece with voids and planks of varying depth for stacking newspapers & magazines.

